

Information for residents and business adjacent to Victoria Road:

From 28th April 2025 for a period of 4 weeks, Walker Construction shall commence road improvement works on Victoria road B585.

Due to the nature of these works, traffic management will be in place from 24hrs a day in the form 3-way temp traffic signals for 4 weeks, followed by a weekend road closure to complete the work.

Victoria Road will be closed from 1pm on 24th of May till 5am 26th of May. Please see the traffic management plans detailed within this leaflet.

Access will be maintained for residents during the works with diversion signage in place to guide traffic around the works area.

We apologise for this inconvenience caused and would appreciate if those alternate routes could be followed.

Useful telephone numbers for the works:

24 Hour emergency hotline: **07710077725**

In works queries: **Walker Construction: bucksoffice@walker-construction.co.uk**

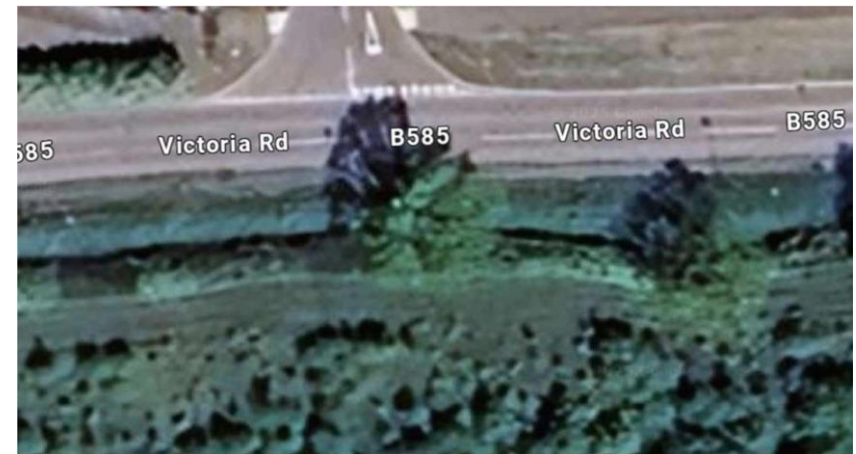


WALKER CONSTRUCTION

Notification of Roadworks

Victoria Road

From 28th April 2025



Works being undertaken

Walker Construction (UK) Ltd will be carrying out S278 road realignment works for the development.

We will make every effort to avoid traffic delay however with the use of Traffic Control it is impossible to avoid completely. If there are any major issues, please use the contact details provided within this leaflet.

**Works from 28th April 2024
for 4 weeks**

**There will be a Road closures
to facilitate the works which
will take place 24th of May till
the 26th of May.**

Delays in work:

Our work is sometimes delayed by bad weather and unforeseen circumstance, we will keep you updated on any changes via the advance warning signs located at each end of the works.

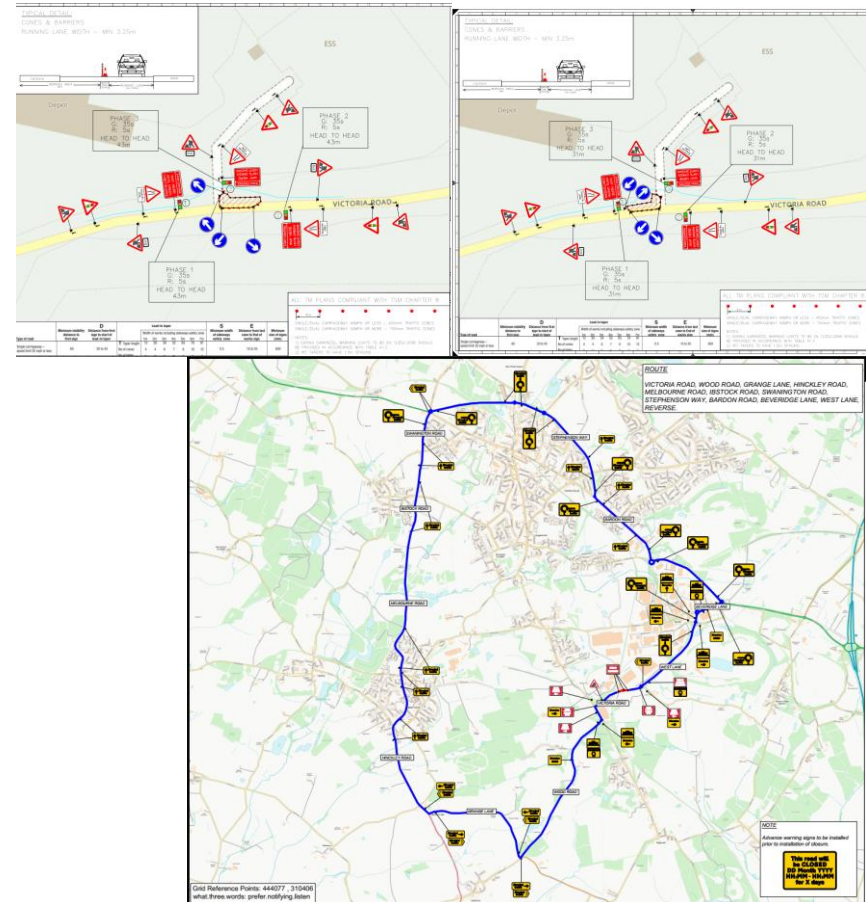
Noise:

There will be some noise, but we will try to keep this to a minimum.

We apologise for any delays this work causes and thank you for your cooperation and patience.

Please keep this information leaflet in a safe place so you can refer to it.

Traffic management to be utilised during lane closure



Keep up to date

Please check on <https://uk.one.network/> where there will be information on any changes to this work.